

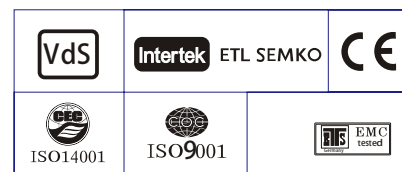
Specification

Nominal Voltage	2V	
Nominal Capacity(20HR)	96.0AH	
Dimension	Length	170±2mm (6.69 inches)
	Width	72±1mm (2.83 inches)
	Container Height	205±3mm (8.07 inches)
	Total Height (with Terminal)	212±3mm (8.35 inches)
Approx Weight	Approx 6.2kg	
Terminal	T6	
Container Material	ABS	
Rated Capacity	100.0 AH/5.00A	(20hr,1.80V/cell,25°C/77°F)
	90.0 AH/9.00A	(10hr,1.75V/cell,25°C/77°F)
	77.5 AH/15.5A	(5hr,1.75V/cell,25°C/77°F)
	69.0 AH/23.0A	(3hr,1.75V/cell,25°C/77°F)
	52.8 AH/52.8A	(1hr,1.67V/cell,25°C/77°F)
Max. Discharge Current	700A (5s)	
Internal Resistance	Approx 1.68mΩ	
Operating Temp.Range	Discharge : -20~55°C (-4 ~131°F)	
	Charge : 0~40°C (32 ~104°F)	
	Storage : -20 ~50°C (-4 ~122°F)	
Nominal Operating Temp. Range	25±3°C (77 ±5 °F)	
Cycle Use	Initial Charging Current less than 24.0A.Voltage	
	2.4V~2.5V at 25°C(77 °F)Temp. Coefficient -5mV/°C	
Standby Use	No limit on Initial Charging Current Voltage	
	2.25V~2.3V at 25°C(77 °F)Temp. Coefficient -3mV/°C	
Capacity affected by Temperature	40°C (104°F)	103%
	25°C (77°F)	100%
	0°C (32°F)	86%
Self Discharge	GEL series batteries may be stored for up to 9 months	
	at 25°C(77°F) and then a freshening charge is required. For higher temperatures the time interval will be shorter.	



Applications

- ◆ Telecommunications
- ◆ Solar system
- ◆ Wind power system
- ◆ Wheelchair
- ◆ Floor cleaning machines
- ◆ Golf trolley
- ◆ Boats



Constant Current Discharge (Amperes) at 25°C (77°F)

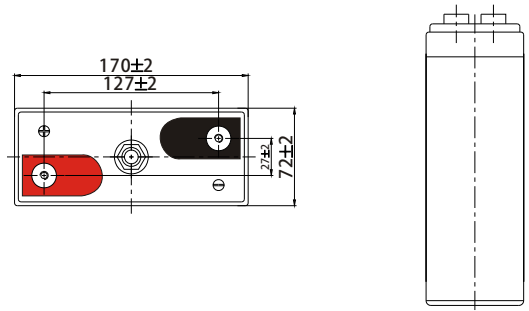
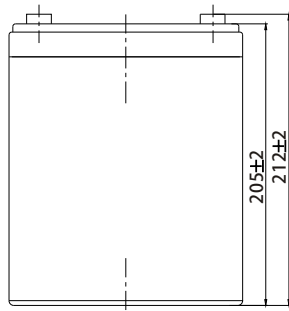
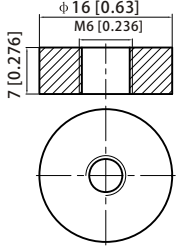
F.V/Time	20min	30min	45min	1h	2h	3h	4h	5h	6h	7h	8h	9h	10h	20h
1.85V/cell	74.5	64.6	51.7	41.6	27.3	20.9	17.2	14.7	12.8	11.2	10.3	9.38	8.67	4.66
1.80V/cell	88.1	75.9	58.9	46.6	29.6	21.7	17.9	15.1	13.1	11.4	10.6	9.65	8.91	4.80
1.75V/cell	96.4	79.4	62.6	49.0	30.7	23.0	18.3	15.5	13.5	11.7	10.8	9.81	9.00	4.87
1.70V/cell	102.7	83.3	65.3	50.9	32.0	23.7	18.9	15.9	13.9	12.2	11.2	10.1	9.19	4.92
1.67V/cell	110.5	88.7	67.1	52.8	32.9	24.7	19.7	16.4	14.3	12.4	11.4	10.3	9.39	4.97
1.60V/cell	119.3	94.5	70.2	54.9	34.0	25.5	20.4	16.7	14.5	12.6	11.5	10.5	9.60	5.03

Constant Power Discharge (Watts) at 25°C (77°F)

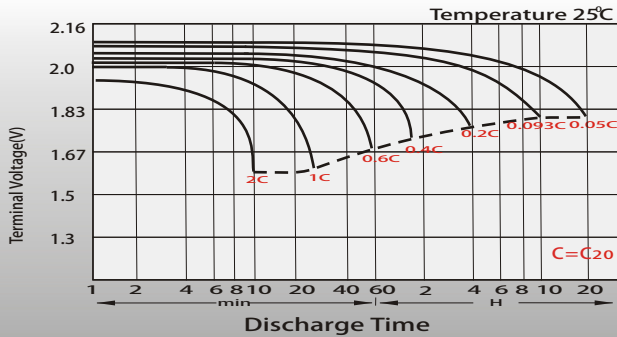
F.V/Time	20min	30min	45min	1h	2h	3h	4h	5h	6h	7h	8h	9h	10h	20h
1.85V/cell	139.6	122.8	99.5	80.5	52.8	40.7	33.6	28.8	25.1	22.2	20.3	18.5	17.2	9.22
1.80V/cell	163.3	142.1	111.9	89.6	57.1	42.1	34.7	29.4	25.6	22.4	20.8	19.0	17.6	9.49
1.75V/cell	177.1	147.8	118.2	93.7	59.1	44.4	35.5	30.1	26.3	22.9	21.2	19.3	17.8	9.62
1.70V/cell	187.5	154.0	122.9	96.9	61.3	45.6	36.5	30.9	27.2	23.9	22.0	19.8	18.1	9.72
1.67V/cell	200.2	162.6	125.1	99.8	62.7	47.5	37.9	31.7	27.9	24.2	22.2	20.2	18.5	9.81
1.60V/cell	213.9	172.3	130.2	103.2	64.6	48.8	39.2	32.2	28.2	24.5	22.5	20.6	18.9	9.90

Dimensions

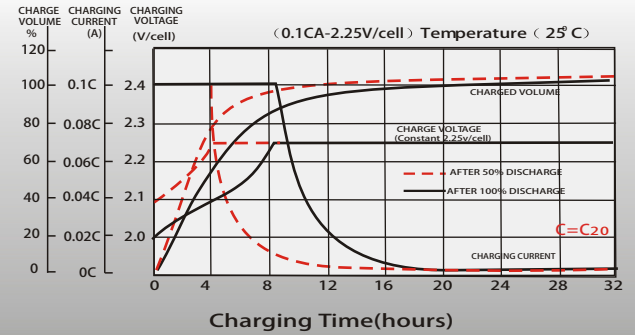
T6 Terminal Unit: mm [inches]



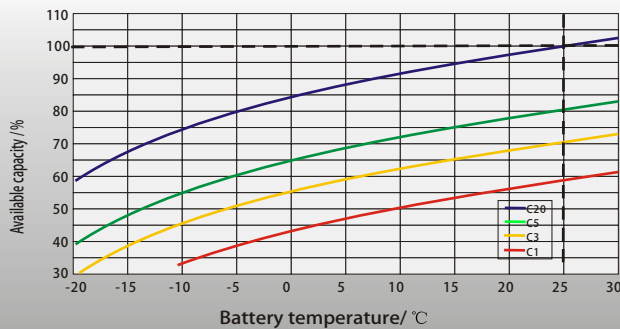
Discharge Characteristics



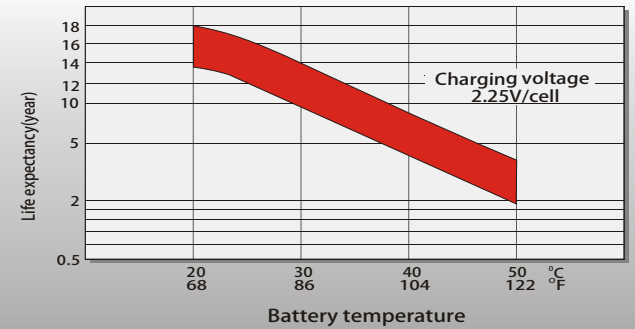
Float Charging Characteristics



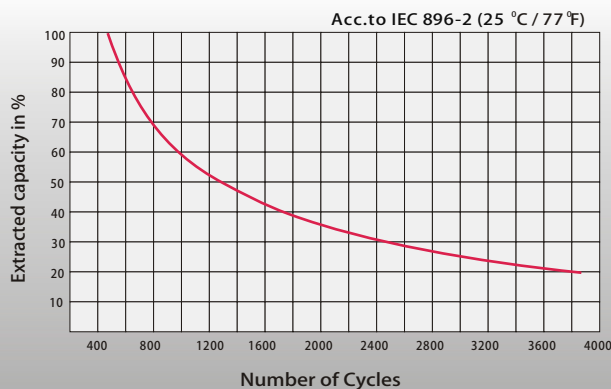
Temperature Effects in Relation to Battery Capacity



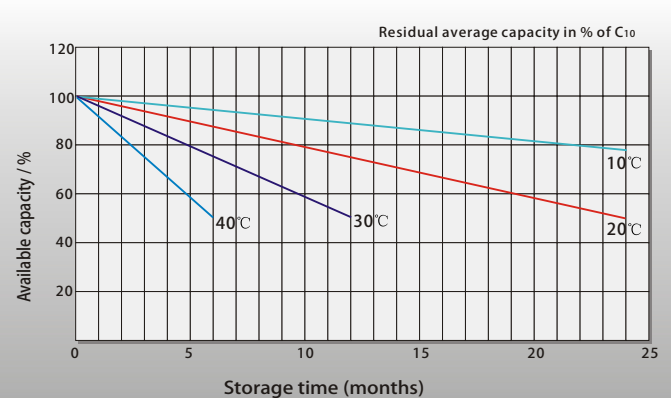
Effect of Temperature on Long Term Float Life



Cycle Life in Relation to Depth of Discharge



General Relation of Capacity VS. Storage Time



Contact US

Greensun Solar Energy Tech Co., Limited

- * Add: No 2000 Changjiang West Road, Shushan District Hefei China
- * Email: info@greensunpv.com
- * Phone: 0551-69866216 Fax: 0551-69866218 Mob: 0086-158 5511 0194
- * Web: <https://www.greensunpv.com> & <https://greensunpv.en.alibaba.com>